

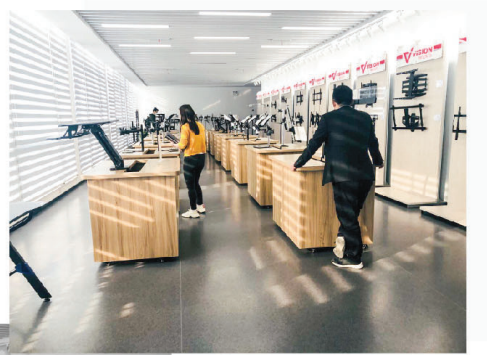


MOBILE LAPTOP STAND



Dedicated in Mounting Solutions
For over 14 years

www.v-mounts.com



Company Introduction

Established in early 2000, Vision Mounts is a prime manufacturer who is specialized in designing and producing a comprehensive line of Universal LED/LCD Wall Mounts, Ceiling Mounts, Projector Mounts, Desktop Mounts, TV Stands, height adjustable desks, gaming desks and electric bed frame for Audio/Video applications in home or office, including user-friendly and environmental-friendly mounting solutions.

■ Engineering Capabilities

We have a dedicated R&D and Engineering team to support and to serve our customer's needs.

We introduce cutting-edge designs and state-of-the-art models annually.

■ Production Capabilities

We serve original equipment manufacturers, institutional and industrial customers, professional installers, as well as globe and national-wide retail chains.

■ Quality Assurance

As an ISO9001:2000 certified manufacturer, we have implemented the Total Quality Assurance system from raw material inspection, production processing control, to final inspection and packaging. We are committed to delivering the highest quality products that are easy to install and maintain with a competitive cost saving solutions.

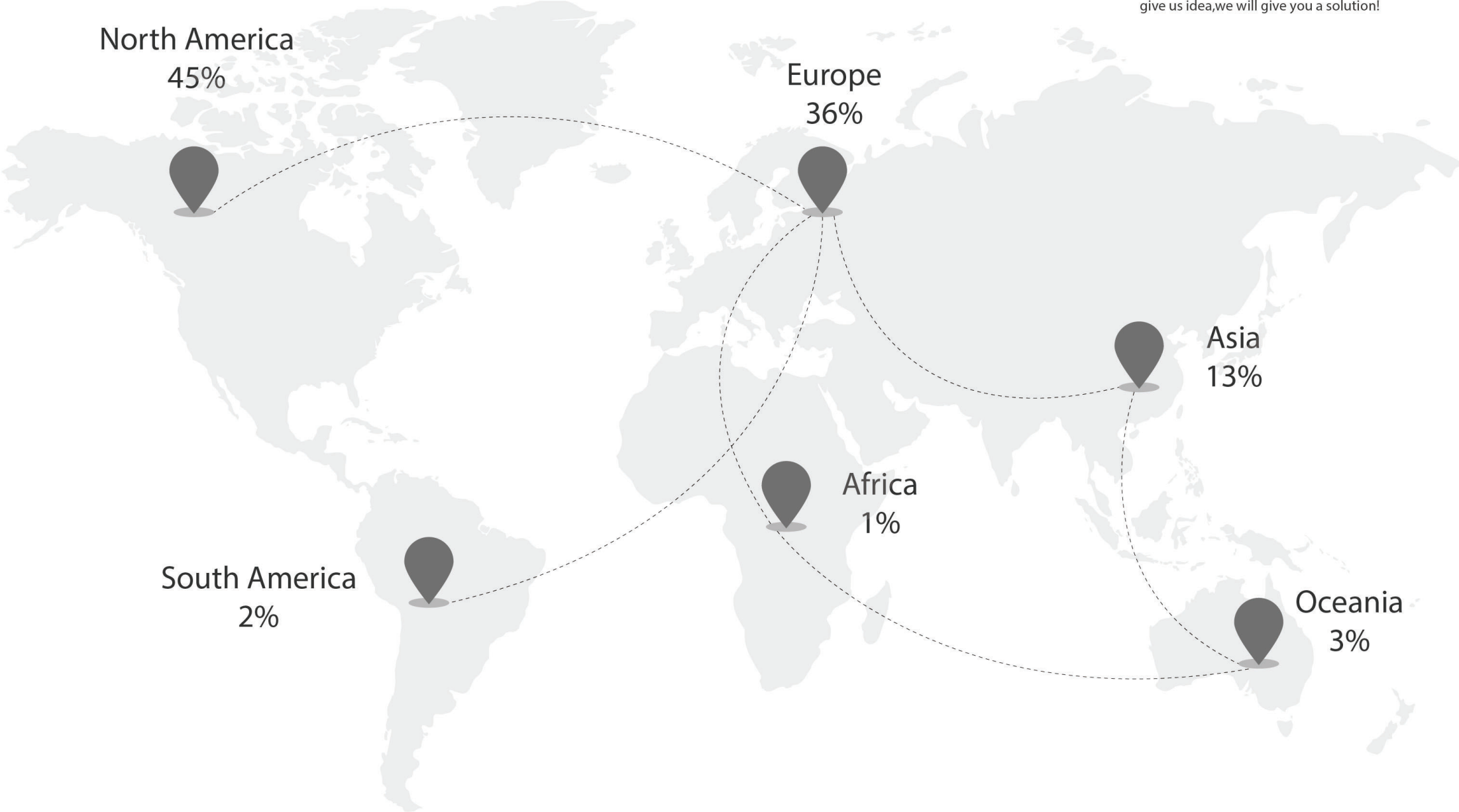
We have a significant amount of products are TUV certified and comply with GS regulations.

■ Customer-Care-Services

Our devoted customer-care-service teams always ensure that your inquiries are responded in a timely fashion and your orders are on-time delivered. Customer satisfactions are guaranteed.

Trade Capacity

We focused on supplying the innovative and affordable solution for global customers. Simple contact us with your custom requirements. give us idea,we will give you a solution!



The World's Major Exhibition

We focused on supplying the innovative and affordable solution for global customers. Simple contact us with your custom requirements. give us idea,we will give you a solution!



Mobile Desk (Manual)

Max load:10kg/22lbs

Dimension:400x440x675-1000mm

Sit-Stand Desk Cart With Side Table

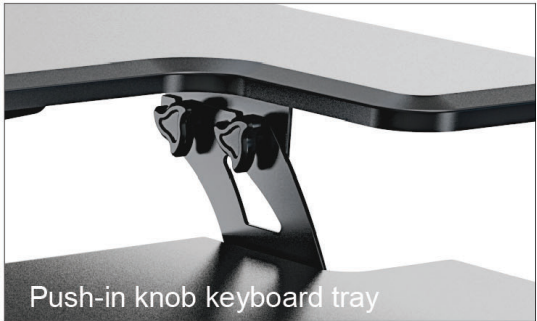


Mobile Desk (Manual)

Max load:30kg/66lbs

Dimension:915x560x770-1220mm

Sit-Stand Desk With Keyboard Tray

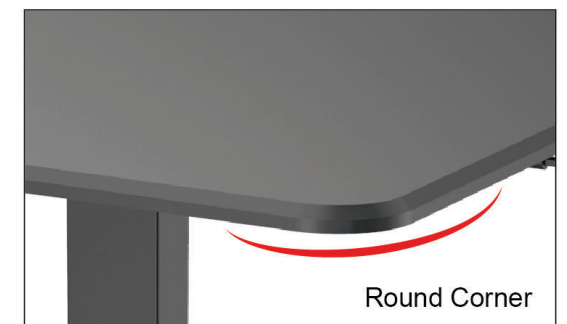


Mobile Desk (Manual)

Max load:30kg/66lbs

Dimension:800x600x770-1220mm

Sit-Stand Desk With Hand Crank

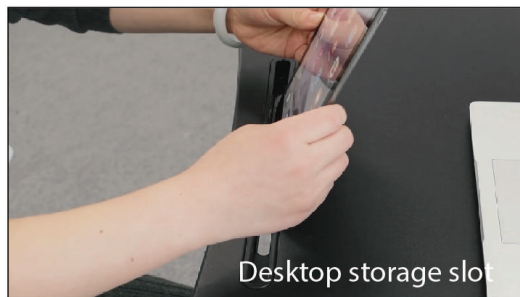
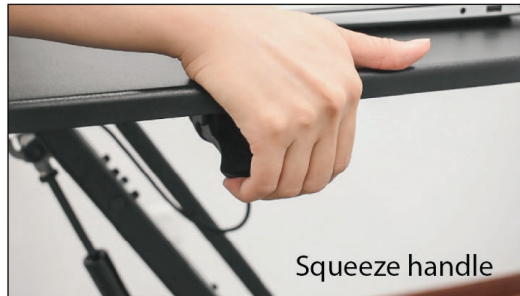


Mobile Desk (Gas spring)

Max load:10kg/22lbs

Dimension:700x540x750-1050mm

Pneumatic Height Adjustment



VM-FD01

Mobile Desk (Gas spring)

Max load:10kg/22lbs

Dimension:700x540x750-1050mm

Pneumatic Height Adjustment



Mobile Desk (Gas spring)

Max load:15kg/33lbs

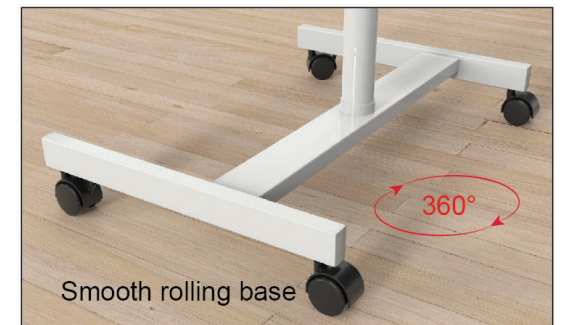
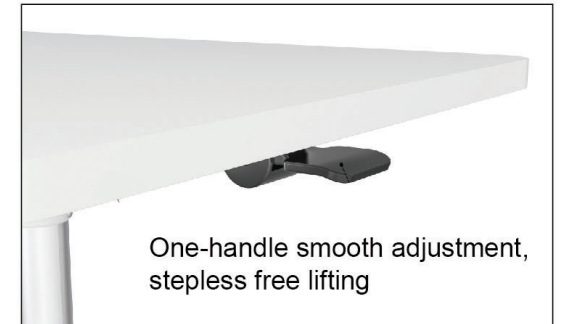
Dimension:915x560x780-1210mm

Pneumatic Height Adjustment



Mobile Desk (Gas spring)

Max load:5kg during moving
Dimension:700x480x705-1100mm
Pneumatic Height Adjustment

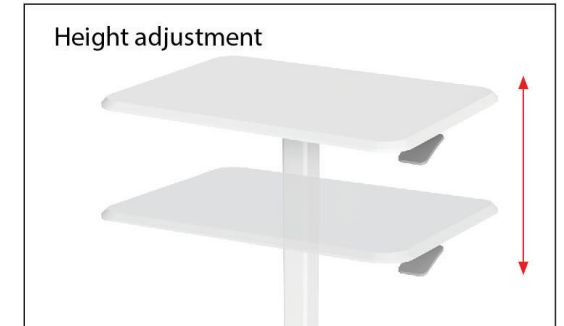


Mobile Desk (Gas spring)

Max load:10kg/22lbs

Dimension:650x480x730-1090mm

Pneumatic Height Adjustment

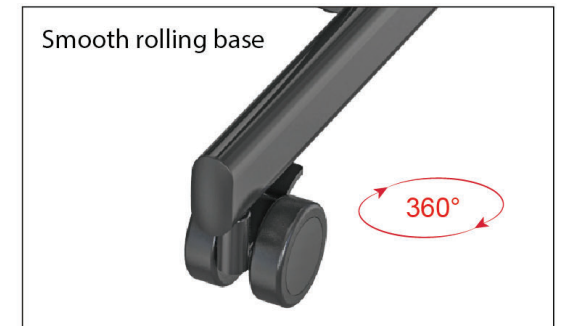


Mobile Desk (Gas spring)

Max load:15kg/33lbs

Dimension:880x500x750-1075mm

Pneumatic Height Adjustment



Mobile Desk (Gas spring)

Max load:15kg/33lbs

Dimension:710x550x750-1100mm

Pneumatic Height Adjustment

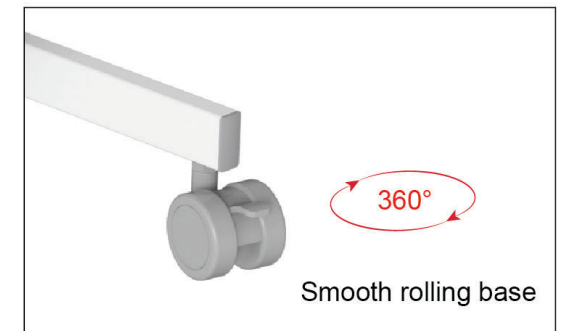


Mobile Desk (Gas spring)

Max load:15kg/33lbs

Dimension:710x500x750-1100mm

Pneumatic Height Adjustment

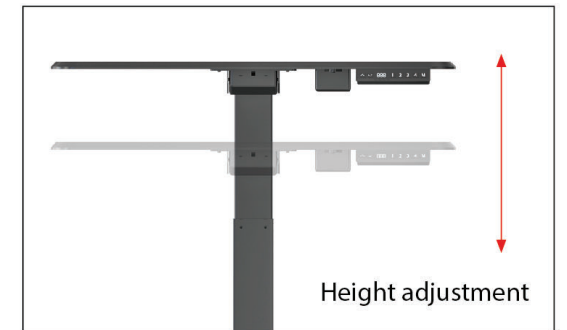
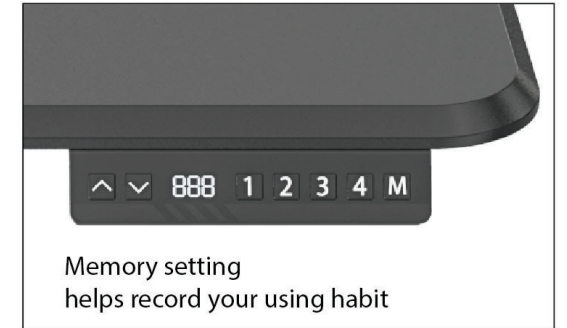


Mobile Desk (Electric)

Max load:40kg/88lbs

Dimension:800x600x780-1230mm

Electric Height Adjustment

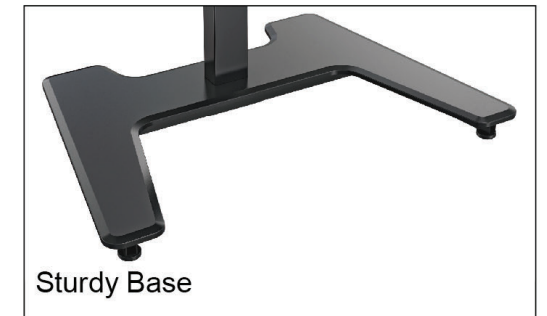
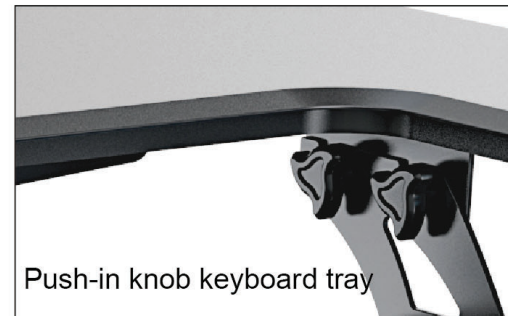


Mobile Desk (Electric)

Max load:40kg/88lbs

Dimension:915x560x600-1250mm

Electric Height Adjustment



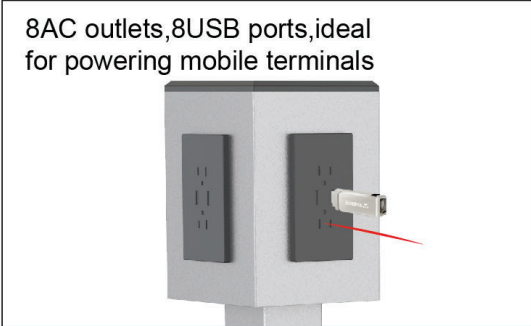
- By Function:Electric
- Material:Steel/MDF
- Speed:25mm/s
- Power Input:110-240V
- Motion Noise:< 55dB
- Ip Grade:IP20
- Operation Temperature:-20°~+50°

Rectangular Column Standard Three-stage

Mobile Power Tower

Dimension:570x570x1135mm

Move to any location you want





THANKS

www.v-mounts.com

